

Year 11 Selecting & Favouriting courses & Apprenticeships

Completing your PS16
application for Post 16
education or training.





Careers Guidance

Careers Guidance



unifrog

Unifrog



Positive Steps

PS16 Login

We now have links to the Careers Guidance page, PS16 login and Unifrog on your Student Portal on the RMA website.



Login

Sign Up

Username

Password

Log In

[Forgotten your username?](#) / [Forgotten your password?](#)

[Return to homepage](#)



If you forget your password or your username, you can click on 'Forgotten your username' or 'Forgotten your password' and you will receive an email to your school email address, allowing you to reset your password




noreply@eprospectus.co.uk

✓ Marie Butler

10:4

PS16 - Forgot Your Password

 If there are problems with how this message is displayed, click here to view it in a web browser.



Hi there Simon Mitchell, to finish resetting your password. Click on the link below.

This code will expire on 03/09/2020 11:14:32.

[Reset Password](#)

eLearning by First Media..



Welcome back, Rushey

What do you want to do today?

Apply

You need to fully complete both your profile and next steps before you can make an application.

Your profile

A record of your information.

Status ncc

[Update your details](#) >

Your next step

Where you plan to go after year 11?

Status complete

[Change destination](#) >

Your Applications

Management centre.

[Create or Review applications](#) >

Tools

This is where you can access additional packages.

Message centre

You have **0 new messages.**

[Create a new message](#) >

[View your inbox](#) >

Your favourites

Add and remove saved courses.

[Manage your list \(0\)](#) >



Search for opportunities

What do you want to study?



Full time courses

Browse our range of both vocational and academic courses and get your career off to a flying start.



Employment opportunities

Use the search filters to find the right opportunity for you.

< Back

Search for courses

What do you want to study?

Enter either the postcode where you live or where you would like to travel from

Not quite sure what you're looking for or where to start? Try searching

By Provider

By Sector

By Qualification

By Level

Filter by A B C D E F G H I J K L M N O P Q R S T U V W X Y Z Reset



Advanced Football Development Academy

College



Ashby School

Academy with 6th form



Beauchamp City Sixth Form

Sixth Form



Beauchamp College

School with 6th form



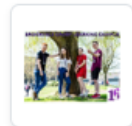
Bosworth Academy

Academy with 6th form



Bradgate Sixth Form

Sixth Form



Brookvale Groby Learning Campus

School with 6th form



Cedars Martin Sixth Form College

Academy with 6th form



Countesthorpe Academy

School with 6th form



English Martyrs Catholic School

Academy with 6th form



FSD Academy

College



Gateway Sixth Form College

College



Heart of England Training

Training Provider



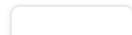
Leicester College

College with learners



Loughborough College

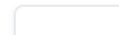
College



Lutterworth College



New College Leicester



North Warwickshire and



What is the best college for me?

We can't tell you which college is best for you as you are an individual. The following factors need to be considered when selecting a college: -

Most importantly - Does the college offer the course/courses that I want to do? Do you have the correct grades to apply for the course/courses you have chosen.

- What do you know about the college? Is it a school with a sixth form such as Beauchamp College or Bradgate, a sixth form college such as Beauchamp City, WQE or Gateway or an adult college such as Leicester or Loughborough.
- How far is it from your house? (Try and test out the journey on public transport with friends or family to see how long it would take you to get there).
- What enrichment (extra-curricular) activities does the college provide?

College website Links: -

Beauchamp City Sixth Form - <https://www.beauchampcity.org.uk/>

Beauchamp College - <https://www.beauchamp.org.uk/>

Gateway College - <https://www.gateway.ac.uk/about-us/>

WQE College - <https://www.wqe.ac.uk/>

Loughborough College - <https://www.loucoll.ac.uk/>

Leicester College - <https://leicestercollege.ac.uk/>

NWSLC – <https://www.nwslc.ac.uk/>

Bradgate Sixth Form - <https://www.bradgatesixthform.com/>



Filters

Select the type of course you're interested in to filter your results.

Search by keyword

POSTCODE



Enter either the postcode where you live or where you would like to travel from.

- Any Distance -



2024-2025



- All Areas -



- All Qualifications -



- All Sectors -



- All Levels -



WQE



- Unsorted -



Apply filters



WQE

University Road, Wyggeston Drive, Leicester , Leicestershire, LE1 7RJ

More information >



3D Design (Architecture and Product) : A-level

WQE

GCE A/AS Level or Equivalent Level 3



Accounting : A Level

WQE

GCE A/AS Level or Equivalent Level 3



Acting (LCPA) : Level 3 BTEC Extended Diploma (= 3 A Levels) (FULL TIME at LCPA)

WQE

National Extended Diploma (BTEC) Level 3



Ancient History : A-level

WQE

GCE A/AS Level or Equivalent Level 3



Art (Fine) : A-level

WQE



Levels and Courses

- What level can you apply for at college?

Your level at college is based on your current predicted grades.

We uploaded your predicted grades from summer 2023 to PS16 to guide you when choosing courses to add to your favourites.

This is a basic guide to how your grades match up with levels at college

Predicted grades at Rushey Mead	Level at college
Mainly 1s & 2s	Entry Level, Level 1
Mainly 3s	Level 2
Mainly 4s but 3s in English Language and/or Maths	Level 2 plus retake Maths and/or English Language GCSE to achieve a pass rate of 4 before progressing on to Level 3
Mainly 4s including English Language & Maths	Level 3 BTEC
4s and 5s or above including English Language & Maths	Level 3 BTEC/T level or 3 x A levels

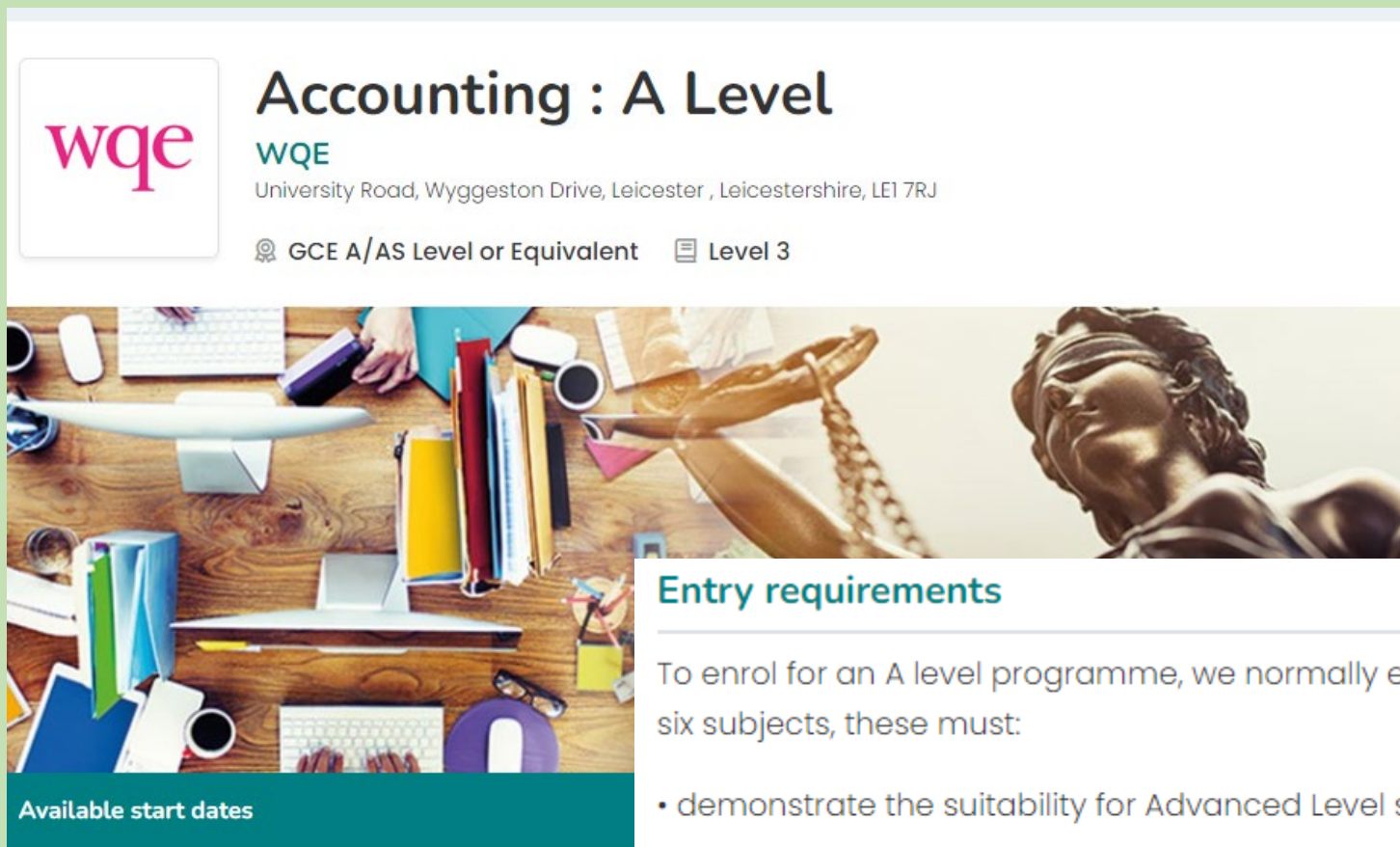
Subject/Teacher	End of KS4 Target	Prediction Summer Term	Attitude to Classwork	Attitude to Home Learning
English Mrs Baldwin-Jones	8	7	B	B
English Literature Mrs Baldwin-Jones	8	6		
Mathematics Ms L Bridges Mr A Rajput	8	6	B	B
At the end of every week review your learning and utilise MathsWatch, Dr Frost Maths and Corbettmaths to practice questions and consolidate and extend your learning.				
Science Double Award Mrs S Mussa	8	77	B	B
Complete extra work, for example weekly revision, in own time.				
French Mrs G Bartlett	8	5	B	B
Complete all summer holiday homework by revising all passive and active vocabulary, as well as your revision prompts, to ensure you are fully prepared for the start of Yr 11.				
Geography Mr S Siddiq	8	7	B	A
Try to link knowledge from previous units to the current unit.				
PE Core Mr J Price	-	-	B	-

Design Technology Miss P Launa-Hewage	8	8	B	B
Prepare for assessments by using all resources provided.				
Religious Education Mr G. Georgiou	8	6	B	B
Revise using revision resources provided to improve your knowledge of keywords and religious beliefs for each topic.				

This student can apply for Level 3 courses.



College course entry requirements do vary – your best bet is to click on the course you want to do and check what they are looking for in terms of grades for that course.



wqe

Accounting : A Level

WQE
University Road, Wyggeston Drive, Leicester , Leicestershire, LE1 7RJ

📍 GCE A/AS Level or Equivalent 📄 Level 3

Available start dates

Entry requirements

To enrol for an A level programme, we normally expect applicants to have achieved good GCSE passes in at least six subjects, these must:

- demonstrate the suitability for Advanced Level study
- have been achieved at Grade 4/C as a minimum
- include two at Grade 5/B as a minimum

In addition, this course also usually requires students to have achieved grade 4 or above in GCSE Mathematics and a grade 5 or above in English Languages. It is not necessary to have previously studied Accounting.



Adding courses to favourites

Simple – Just click on
Add to Favourites

Added to favourites

Accounting : A Level has been added.

Thanks

Now click on
'Thanks!' and
continue your
search by clicking
on the 'Back to
Search Results'



[← Back to search results](#)



Accounting : A Level

WQE

University Road, Wyggeston Drive, Leicester , Leicestershire, LE1 7RJ

GCE A/AS Level or Equivalent Level 3

Available start dates

Sunday, 01 September 2024

WQE 2 Year(s) Full time Daytime/working hours £ NULL

In Favourites

Your profile

A record of your information.

Status **ncc**

[Update your details](#) >

Your next step

Where you plan to go after year 11?

Status **complete**

[Change destination](#) >

You can view your favourites by clicking on 'Your account' at the top of the screen and scrolling down to 'Your favourites' and click on 'Manage your list'

You can add as many courses as you want to in your favourites. This will allow you to compare courses before deciding which courses to apply for. We recommend choosing a minimum of 2 colleges, maximum of 3.

Tools

This is where you can access additional packages.

Message centre

You have **0 new messages.**

[Create a new message](#) >

[View your inbox](#) >

Your favourites

Add and remove saved courses.

[Manage your list \(1\)](#) >

[< Back to your account](#)

Compare and organise

These are the courses/opportunities you've added to your favourites list, grouped by provider.



WQE

Accounting : A Level Level 3 (01/09/2024)

[View](#)

[Remove](#)



When do you need to submit your applications?

You need to wait until your Careers team updates your qualifications on PS16 with the predicted grades on your December termly tracking report. **We will advise you via your school email and through your tutors when this has been completed.**

All areas of your profile must be completed before you can submit your applications.

You must submit your applications by the end of the Autumn term - **21st December 2023.**

Your tutor references will be added by **12th January 2024**

Between **13th January 2024** and the deadline of **31st January 2024**, your Careers team will check all college applications to ensure that students have applied for the right courses and have completed their applications correctly.

We will release the applications to the colleges from the **middle to the end of January 2024.** The deadline is **31st January 2024.** **Applications received after this date risk not being considered by colleges.**





Image by Freepik

Choosing to study
A levels, BTEC or T
level?

What about
apprenticeships?



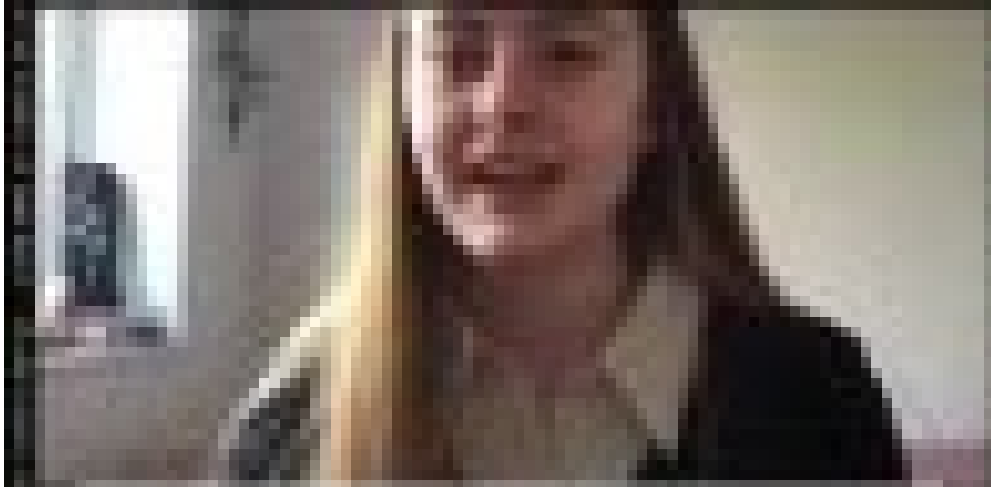


BTEC or A Levels

- [BTECs vs A-Levels - YouTube](#)



T Levels



enjoyment
and
activities
into the classroom

Using CAD is





Apprenticeships

- Learn while you earn
- 80% on the job training and 20% study
- 90% of apprenticeships result in an offer of employment.
- You receive an industry recognised apprenticeship standard.
- You can even study to become a solicitor with an apprenticeship





Apprenticeships





Apprenticeships

- Apprenticeships are job specific – type in Engineer and you get a range of jobs which can include: -
Design Engineer, Engineering Technician, Mechanical Manufacture Engineer & Heavy Vehicle Technician.
- Start Date – must be after your GCSEs (From 1st July 2024)
- Qualifications – Normally asks for a minimum of grade 4 or above in Maths & English Language
- Other things to consider – Apprenticeships are open to all age groups so may include travelling between different sites and having a full driving licence
- Training – might not be a college, could be a training provider further away from the employer
- Are you ready to enter the workplace?



Summary

- **College choice** - It is most important that your first consideration when choosing a college is, does it offer the course/courses that you want.
- **Type of course** – consider how you prefer to study – A levels – exam based, BTEC/T levels – coursework based.
- **Entry requirements** – make sure that you have the correct grades to match the entry requirements for the course/courses before you apply.
- **Apprenticeships** – apply alongside your college applications.

Don't forget that your tutor will write a reference to support your college applications – if there are any areas that you can improve on, do it now!

Come to B145 and speak to a member of your careers team if you need help and support with your applications

Image by jcomp on Freepik

