



RUSHEY MEAD
ACADEMY
Careers

YEAR 8 –Parent Information



Image by rawpixel.com on Freepik

RMA Careers vision – *To raise the aspirations of all Rushey Mead Academy students to enable them to make a positive difference to our world.*

Why is careers education important?

- **Encouraging student aspirations**
- Enabling students to make well informed decisions about GCSE options, post 16 choices and possible careers through careers education, advice & guidance.
- Encouraging personal development,
- Linking what happens at school to future careers goals.

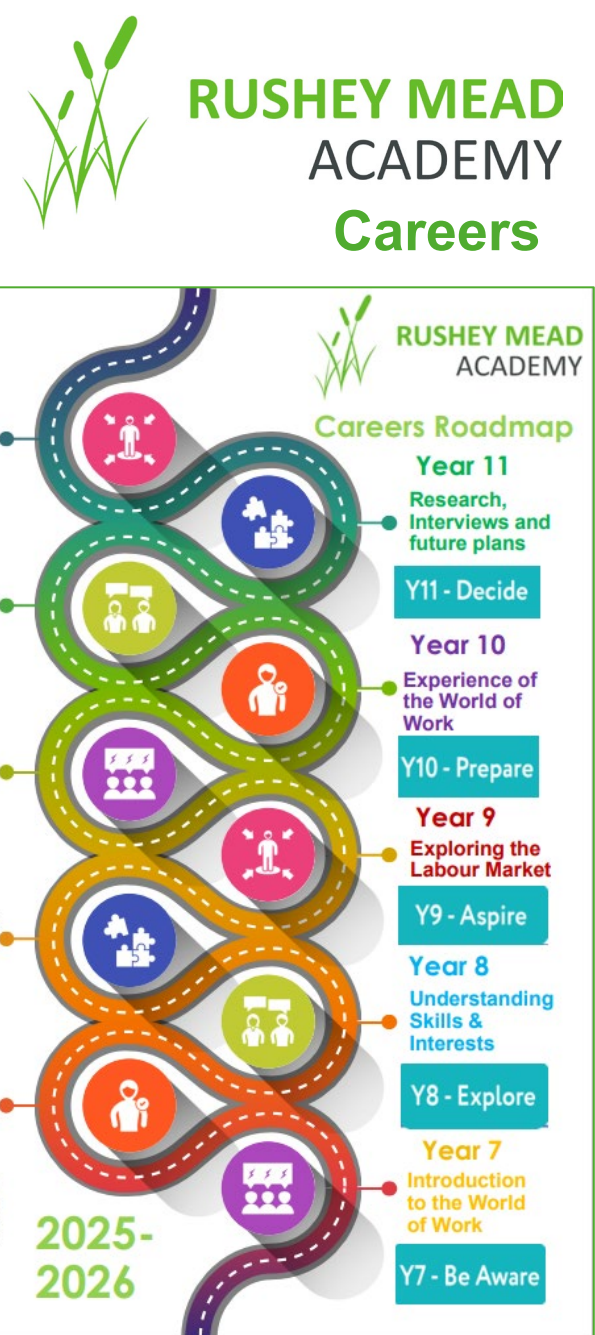


RUSHEY MEAD ACADEMY Careers



What we offer students: -

- Regular tutor time careers lessons for all year groups and accompanying careers workbooks to build a strong foundation of careers education.
- Careers assemblies across all year groups about college, university and apprenticeships.
- Work Experience in Year 10 – we are introducing work experience opportunities for students in KS3, planning to start with Year 8 students.
- Mock interviews in Year 11 to improve student communication and confidence.
- Every student has a 1:1 meeting in KS4 with a qualified careers adviser.
- All students have access to the Careers team in B145 at break or lunchtime for information and guidance.



The Careers Team

What we offer Year 8 students: -

- **Regular termly tutor time careers lessons throughout the year.**
- A Careers workbook to complete during the tutor time careers lessons to prepare students for choosing options and future study/career choices.
- **What's My Job? – 9th July 2026** – from the success of the last 2 years – we are running this event again this year. This event involves students interacting with business volunteers from many different career sectors in a classroom setting.
- Students can email the team – careers@rushey-tmet.uk if they have any questions about careers.
- **Our office is B145** - students are welcome to come and see us for additional help and support at break or lunchtime.



Mrs Butler
Careers Lead



Mrs Sewell
Careers Adviser



Mrs Mee
Careers Adviser



RUSHEY MEAD
ACADEMY
Careers



Year 8 Careers Workbook
2025/2026

Student Name
Tutor Group.....

RMA Careers vision – *To raise the aspirations of all Rushey Mead Academy students to enable them to make a positive difference to our world.*

What we cover in the tutor time careers lessons – Year 8 Explore



RUSHEY MEAD ACADEMY Careers

Recognising skills

Interests – how these link to careers

Pathways and options available after Rushey Mead

Careers Challenges & Rewards

Careers and the climate – how climate change affects available jobs.

LMI (Labour market information) – What it is and why it is important

We offer unbiased information, advice and guidance to enable your child to make their own fully informed decision about their future after Rushey Mead Academy



RMA Careers vision – To raise the aspirations of all Rushey Mead Academy students to enable them to make a positive difference to our world,

What's My Job? 9th July 2026

What's My Job? is an event held in school where students get the opportunity to talk to and interact with employees from different job sectors

The employee answers questions from students with yes/no answers to begin with.

Students are then encouraged to try and guess what their job is.

Students then get the opportunity to ask questions and get more information about their job role.

This event enables students to explore different job roles that they may not have previously considered.

RMA Careers vision – *To raise the aspirations of all Rushey Mead Academy students to enable them to make a positive difference to our world.*



RUSHEY MEAD
ACADEMY
Careers

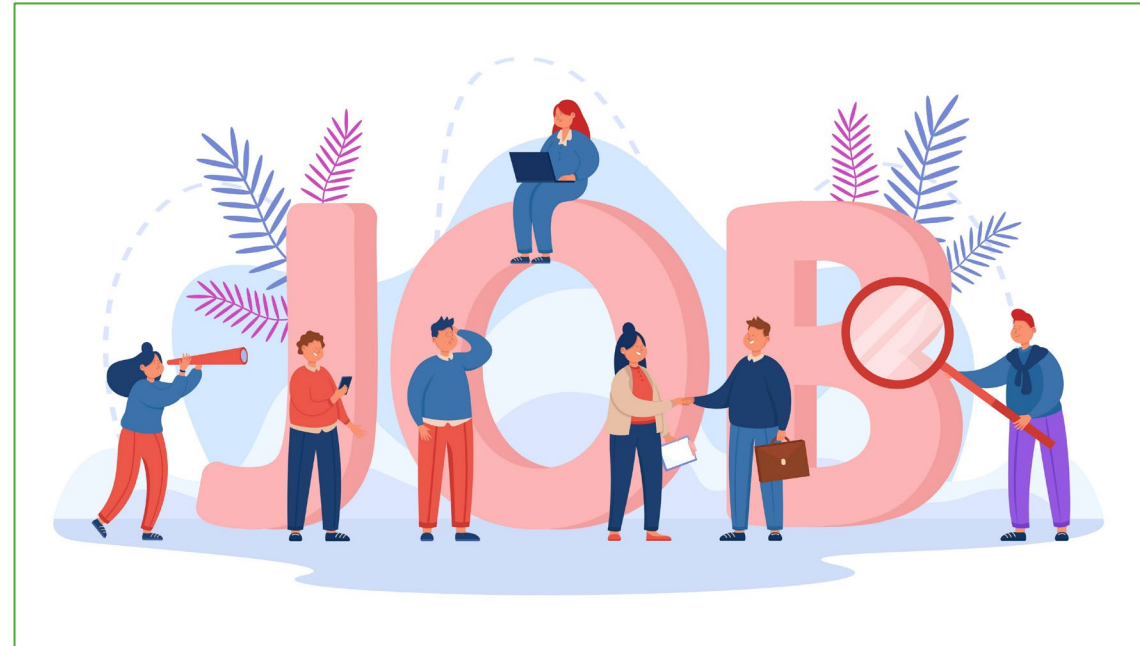


Image by pch.vector on Freepik

Advice for deciding which options to choose in Year 9

In Year 9 students will be divided into 2 groups for option choices

Group 1 – These students have 1 free choice plus choosing between History & Geography as their second choice

Group 2 – These students have 2 free choices

Options include: - Art, Photography, Design Technology, Drama, Food & Nutrition, Music, Physical Education, Music & Health & Social Care

Other options are: - Computer Science, Geography, History, Economics, Spanish, Media & Economics

Students need to study these subjects if they want to continue studying them after Rushey Mead at college: - **Art, Design, Photography, PE, Food, Drama, Dance**

Students do not need to have studied these subjects at Rushey Mead if they want to study them at college: - **Computer Science, Economics, Media, Health & Social Care**



Image by rawpixel.com on Freepik

RMA Careers vision – *To raise the aspirations of all Rushey Mead Academy students to enable them to make a positive difference to our world.*

How can you support your child with choosing options in Year 9?

Check if your child has any thoughts about what they want to study at college or what career/job they would like in the future – Will it help or be necessary to study certain subjects at school first.

If your child has no particular thoughts on what to study, encourage them to explore the practical and creative courses as well as the academic ones to find courses that they will enjoy.

Every student studies the equivalent of 7 or 8 GCSEs at Rushey Mead BEFORE they add their options. They already study a wide range of subjects which will enable them to study A levels at college if they achieve the grades required.



RUSHEY MEAD
ACADEMY
Careers



Image by rawpixel.com on Freepik

RMA Careers vision – *To raise the aspirations of all Rushey Mead Academy students to enable them to make a positive difference to our world.*

Encouraging good habits now

Maths & English GCSEs

Attendance matters – evidence shows that the students with the highest attendance at school achieve the best GCSE and A level results

Punctuality – on time, every time to school and lessons – not only is it disruptive to tutor time and lessons if your child arrives late but it interrupts your child's learning

Homework – This is important as it helps embed a student's learning

Behaviour in lessons

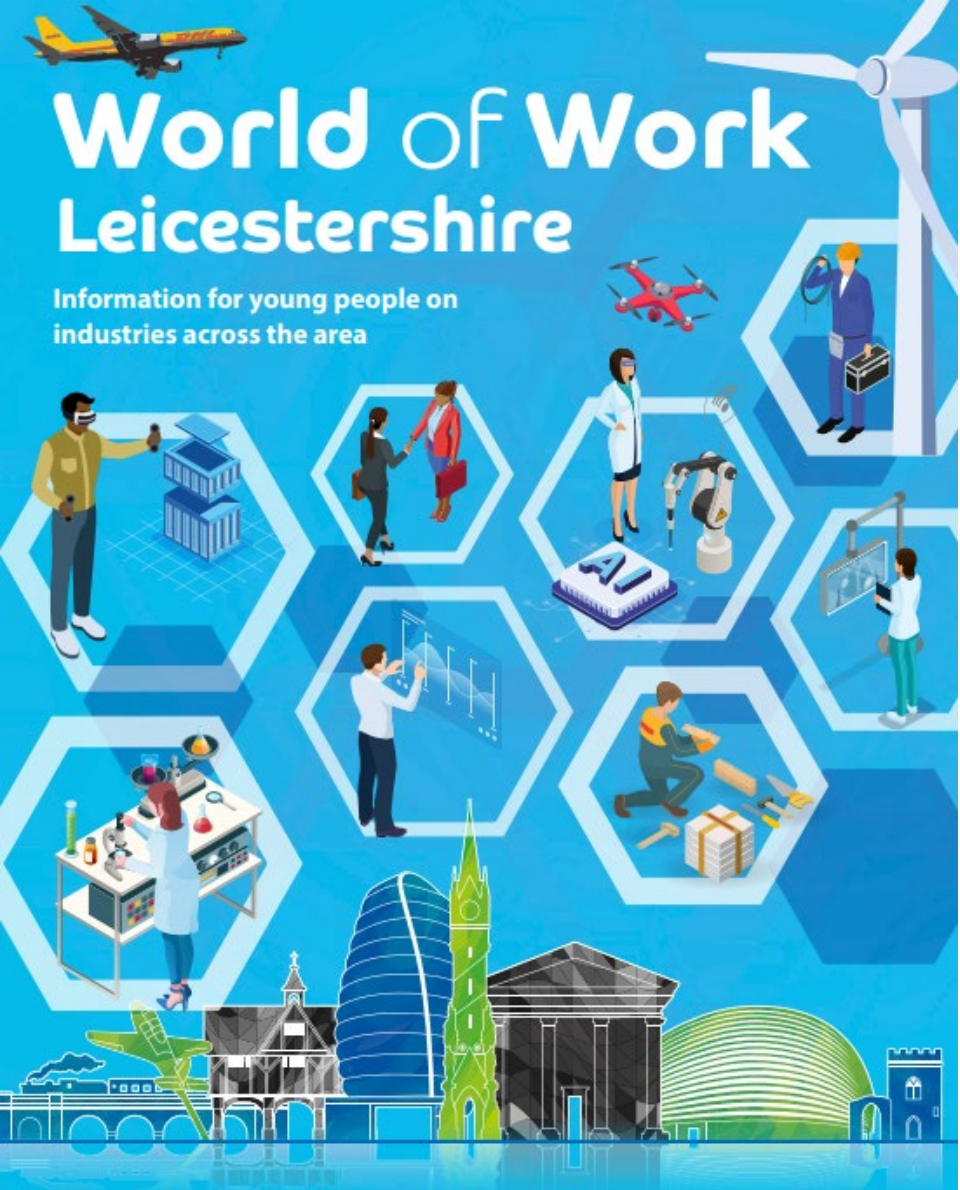
Work/Life Balance – Encourage your child to have activities outside of their studies – after school clubs are available at Rushey Mead

Talk to your child about their schoolwork so that you can support them if they become worried about it



Image by freepik

RMA Careers vision – *To raise the aspirations of all Rushey Mead Academy students to enable them to make a positive difference to our world.*



Labour Market Information and Pathways







Leicester and Leicestershire



The World of Work

What is the Labour Market?

- ↑ What skills and qualifications employers are looking for
- ↑ Which industries are recruiting and where they are located
- ↑ The number of people in certain types of jobs
- ↑ Growing or declining job areas and employment trends

What is changing?	How can it affect jobs?	Impact	Which job areas will be important?
New technology is being developed all the time	Loss of some traditional jobs 	Change in skills needed	Electronics, Robotics, Cyber Security & Data Science
People are living longer 	More support needed for people	Large demand for health and social care	Health Care, Social Care, Life Sciences, Pharmacology
Pace of change is speeding up	New skills need to be learnt quickly	Exciting new opportunities, AI and new technology 	Innovation is desperately needed – flexibility, problem solving
The skills around the world are improving 	More competition	IT enables people to be delivering work here from other countries	Education, Science, Engineering, Creative and Media, Finance
Environmental awareness is growing	Research and development on energy saving	Wide variety of roles in all sectors, skilled engineers and mechanics 	Engineering, Chemical Processing, Energy & Utilities
Increase in well-being and leisure 	Demand for catering, health and fitness and gaming	Growth in tourism, spa facilities & fitness	Health & Beauty, Sport and Leisure, Hospitality

Look at Leicester and Leicestershire



99.6% 
OF BUSINESSES
LOCALLY ARE
MICRO (0-9 STAFF)
SMALL (10-49 STAFF)
OR MEDIUM
ENTERPRISES (50-249 STAFF)

Why work for a smaller business? – Input valued / more variety / quick progression / more contact with senior managers – greater impact

Employers locally say...

- Value young people with **good communication skills & strong work ethics**
- Useful skills include **digital, problem solving, adaptability**
- Be open to **different sectors**, there are a range of opportunities in most sectors
- Ideally 5 good GCSE results including English, Maths & Science – **strengthened with skills and personality!**
- **Work experience or voluntary experience is valued**



Health & Social Care



Useful subjects: Maths, English, Science, ICT, Psychology, Sociology



Over **350 different careers** in the NHS



The NHS is the employer that advertises the most jobs locally



Leicestershire is world renowned for services in Cardiovascular and Respiratory Medicine



Growing use of **technology** in Health and Social Care



Communication and strong people skills are highly valued!



22% of roles locally are in nursing – 94% of graduates are in work within 3 months and UK qualifications are internationally recognised.

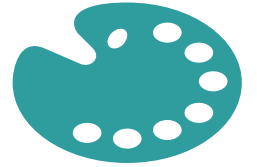
Pathways – GCSE, T-Levels / Apprenticeships / A-Levels / Degree



Creative



Useful subjects: English,
Maths, ICT, Art &
Design, Media



The sector is all about **generating original ideas and products**

3

Arts / Culture / Creative Media

Jobs include Design, Film & Video Production / Marketing / Advertising / Computer Game Development / Animation

Shortages in Skills – 3D Designers, Digital Media / Broadcast Engineers

**Check out - Rock Kitchen Harris /
Twist and Shout / Colab Creation /
Bulb Studios**

Pathways – T-Level in Digital, Design and Development /
high percentage of graduates in the sector



Sport and Physical Activity



Useful subjects: Biology,
Maths, PE, Chemistry,
English



Range of opportunities include coaching, analysing performance, developing sport related businesses, nutritionists, grounds keepers

Leading sporting teams – Leicester City Football Club / Leicester Tigers / Leicester Riders / Leicester Hockey Club



Loughborough University is ranked number 1 in the world for sports related subjects



Pathways – Top skills include communication & teamwork
Volunteering is a great way to access the sector
Apprenticeships available



Engineering and Advanced Manufacturing



Useful subjects: Maths, Physics, ICT, Design Technology



Second highest paying sector in the area, accounts for 11% of the regions workforce

Careers include **Research, Testing, Developing Prototypes, Production Engineering & Maintenance**

Predicted skills shortage in 10 years time / a change in skillset required

Loughborough Science Park and MIRA Technology Park leading research and development in Europe



Pathways – Routes in at all levels. Vocational learning is highly valued. Apprenticeships available!



Digital



Useful subjects: Maths, Computing, ICT, Design Technology



Fast growing future proof sector

AI is profoundly impacting the sector



Skills are highly valued – highest average wage compared to other sectors – much in demand

Cyber Security skills, coding, data analytics are in demand!



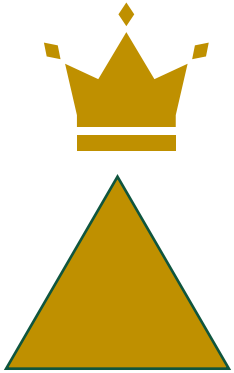
Pathways – All sectors require Digital Skills. Apprentice IT technician, Digital Content roles, Website design.



Logistics & Distribution



Useful subjects: Maths,
Business and Admin,
ICT, Languages



Golden Triangle of Logistics – transport network

Sector is set to grow by 10% by 2023

Magna Park is Europe's largest distribution centre and East Midlands Airport is the UK base for FedEx, DHL and UPS – the UK's busiest cargo airport

Problem Solving Skills **Adaptability** and **Calm under Pressure** are highly valued!



Pathways – Entry Level include Distribution Clerk, Customer Services. Apprenticeships & Graduate schemes in planning and purchasing



Construction



Useful subjects: Maths, Sciences, ICT, Design Technology,



A highly **dynamic** and **critical sector**, includes the planning, designing and construction of buildings, infrastructure including roads and railways. Employs nearly 30,000 people locally and if willing to travel offers high wages and great opportunities to progress.

Local companies offer great apprenticeship opportunities including – **Ibstock Brick, Caterpillar, Breedon Group and Aggregate Industries.**
Sector to grow by 14.8 % by 2030 – housebuilding!

180 different roles in the sector, including HR / Marketing / Surveying

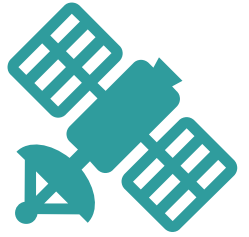
Pathways – Over 30 different apprenticeships in the sector locally. Construction Skills Hub can offer local support – www.leicesteremploymenthub.co.uk



Space



Useful subjects: Maths, Sciences, Geography, IT



One of the **fastest growing** sectors locally! Leicester and Leicestershire is the UK's **leading location** for space.



Space information and research informs our modern life including medical devices, SatNav, climate monitoring and high-speed communications!



2nd largest campus-based cluster with a dedicated space focus in the UK. Strong links with Leicester University. [Home - Space Park Leicester](#)

[Home - Space Park Leicester](#)



Pathways – Most careers need high level engineering, maths and science qualifications. UK's first post 16 Space Engineering course offered by Loughborough College



Labour Market Information (LMI)

Aerospace engineers	Sports coaches, instructors and officials
Weekly Pay £930 Hours/Week 43h	Weekly Pay £710 Hours/Week 35h
Annual Pay £48,360 Hourly Pay £22	Annual Pay £36,920 Hourly Pay £20
Workforce Change (projected) Growth 11.1% The workforce is projected to grow by 11.1% over the period to 2035, creating 2,800 jobs.	Workforce Change (projected) Growth 11.1% The workforce is projected to grow by 11.1% over the period to 2035, creating 9,200 jobs.
You might find this job in Other trans. equipment Repair & installation Metal products Architectural & related Computers, etc	You might find this job in Sport & recreation Education Public admin. & defence Employment activities Gambling
More info Clear card	More info Clear card

Rushey Mead Academy website –
Parents – Careers Guidance –
Parent/Carer area – Labour
Market Information – Explore
LMI, scroll down to Careerometer
[Explore LMI data – LMI For All](#)

Useful websites



RUSHEY MEAD
ACADEMY
Careers

[Careerpilot : Plan your future work & study](#)

[Sign In – Unifrog](#)

[Explore careers | National Careers Service](#)

[Job profiles | Prospects.ac.uk](#)



Image by vectorjuice on Freepik

RMA Careers vision – *To raise the aspirations of all Rushey Mead Academy students to enable them to make a positive difference to our world.*